

Mortdale

January 2012

Matters



Australian Model Railway Association New South Wales Branch Inc. News

Mortdale



January 2012

Matters

From the editors: G'day and welcome to the January 2012 *Mortdale Matters*.

It's the year of 2012, and this year is going to be awesome! We have many things to look forward to in model railways this year; we have many exhibitions and conventions, many new model railway items coming out and most of all, our massive '**Golden Jubilee**' - **50th Sydney Model Railway Exhibition**, so mark in your diary the **October long weekend 2012!**

Our clubrooms will be open on selected Sundays for layout operation and construction during 2012, this will give people more flexibility in their busy timetable. These extra openings will be great for a rainy day! Hope to see you on Sundays.

We are currently looking for photos for our exhibition flyer we are looking for photos of NSWGR 50 class, if you have any photos of a model or real life 50 class please send it to the exhibition manager Alan Cross exhibamransw@optusnet.com.au, this is greatly appreciated.

A reminder that the AMRA NSW Open Weekend will be held on the 31st March and the 1st of April, this is a great day to show our great club to the public. Many things have progressed since our last Open Weekend such as work on the N scale extension, HO layout technology, O scale upstairs layout as well as the O scale exhibition layout. Mark the dates in your diary and let your friends and family or any one who might be interested know about this weekend. Hope you enjoy this issue of *Mortdale Matters*, til next time.

Keep safe and happy modelling

Mark Dalli and Thomas Durber

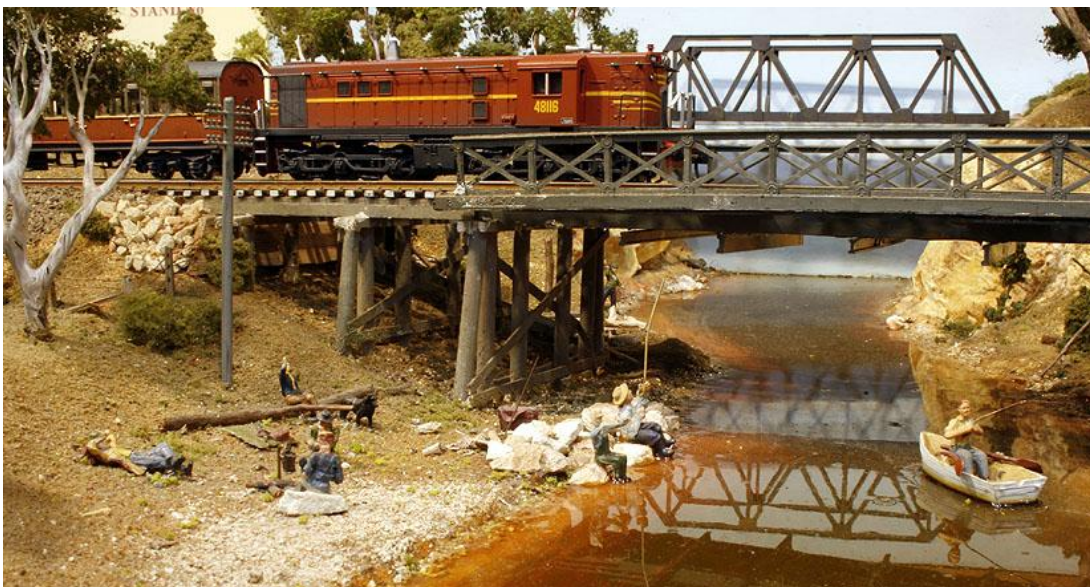
AMRA NSW *Mortdale Matters* editors

Cover: Silverton's 442s4 sits at Port Botany waiting for departure.

PHOTO by Denis Gilmore

Back cover: A glorious morning view of Sydney Terminal now just known as Central.

PHOTO by Rod Fussell



NSWGR's 48116 pulls a passenger train over the bridge on the magnificent layout Jembaicumbene.

This photo was taken at the 2011 Sydney Model Railway Exhibition.

PHOTO by
Maikha Ly

Submitting to Mortdale Matters

With so much continually happening at our Clubrooms, it's easy for something to slip through the cracks. *Mortdale Matters* especially needs photos! The main focus will always be on Branch activities and events, however any prototype photos or information will be considered. If you have a photo send it in, even if you don't think it will be published in the next issue just try, you'll be surprised. Just leave a disk/CD in the Journal pigeonhole in the office or send me an email at mdalli.mmatters@gmail.com with the photo and a brief description of the photo. The image size does not need to be larger than 1024 x 768.

I must emphasise that ALL submissions must be original material, i.e. photos that you've taken yourself or articles that you have written yourself.

Material is published in *Mortdale Matters* at the committee's discretion. The deadline for submitting material for the March 2012 issue is strictly 15th February 2012.

Subscribing to Mortdale Matters

Mortdale Matters is an e-newsletter. That simply means that it is electronic news. To subscribe to this e-newsletter please send an email to our publicity officer Phil at pjlee@iinet.net.au to let him know that you would like this sent to you. The file is sent via email and is around 2.5 - 3.5 MB and anyone can get this sent to them. A reminder that *Mortdale Matters* is not put up on the internet until some time after email copies go out. If you do not have capable internet or email you can pick up a hard copy at the clubrooms. If you cannot pick up a copy at the clubrooms, or do not have email, contact Philip Lee to have *Mortdale Matters* posted to you.

Branch Officers 2012/Contacts

ELECTED	President	Barry Wilcockson	president@amransw.asn.au
	Vice President	David Bennett	vicepresident@amransw.asn.au
	Secretary	Geoff Lanham	secretary@amransw.asn.au
	Treasurer	Marilyn Wilcockson	treasurer@amransw.asn.au
	Exhibition Manager	Alan Cross	exhibamransw@optusnet.com.au
	Publicity Officer	Philip Lee	pjlee@iinet.net.au
	Junior Development Officer	Rod Fussell	juniordev@amransw.asn.au
APPOINTED	Journal Sub-Editor	Rod Fussell	subeditor@amransw.asn.au
	Auctioneers	Denis Gilmore / Alan Tonks	
	Building Manager	David Bennett	vicepresident@amransw.asn.au
	Librarians	John Smythe Fred Stell	
	Exhibition Roster Clerk	Steven Edwards	rosterclerk@amransw.asn.au
	Historian	June Larmour	historian@amransw.asn.au
	Webmaster	David Bennett	vicepresident@amransw.asn.au
LAYOUT	O Scale	Maurie Haynes	
SUB-COMMITTEE	N Scale	David Bennett	ngauge@amransw.asn.au
CO-ORDINATORS	Stoney Creek (HO fixed)	Denis Gilmore	stoneycreek@amransw.asn.au
	East Matelend (HO Exhibition)	Barry Wilcockson	president@amransw.asn.au
	U-Drive	Bill Whale	udrive@amransw.asn.au
	O Scale Exhibition	Lance Pickering	

More from the 2011 Exhibition!



Kerry Every and Barbara Haynes with the Ladies Needles and Natter group at the exhibition.



The early Saturday morning crowd viewing the exhibition.

ALL PHOTOS by Mark Dalli

AMRA NSW Branch Inc. Programme JAN / MAR 2012

JANUARY - 2012

Mon	2nd	Public Holiday – Layout Operation (see Notes)	10am until 5pm
Wed	4th	"Daylighters" - General Activities (see Notes)	10am until 5pm
Fri	6th	Layout Operation / <i>Structured Running</i> (see Notes)	7:30pm until 10pm
Sat	7th	Layout Operation (see Notes)	10am until late
Wed	11th	"Daylighters" - General Activities (see Notes)	10am until 5pm
Fri	13th	Feature Night – TBA... if not possible General Activities	7:30pm until 10pm
Sat	14th	General Activities / <i>Layout Construction</i> Day (see Notes) & Monthly Forum	10am until late
Sun	15th	<i>Stoney Creek Work Day</i> <i>No Facility Fee</i>	10am until finished
Wed	18th	"Daylighters" - General Activities (see Notes)	10am until 5pm
Fri	20th	Layout Operation – European / <i>Structured Running</i> (see Notes)	7:30pm until 10pm
Sat	21st	Layout Operation (see Notes)	10am until late
Wed	25th	"Daylighters" - General Activities (see Notes)	10am until 5pm
Thur	26th	Public Holiday – Layout Operation (see Notes)	10am until 6pm
Fri	27th	Train Maintenance and Testing Night	7:30pm until 10pm
Sat	28th	Layout Operation (see Notes)	10am until late

FEBRUARY

Wed	1st	"Daylighters" - General Activities (see Notes)	10am until 5pm
Fri	3rd	Layout Operation / <i>Structured Running</i> (see Notes)	7:30pm until 10pm
Sat	4th	General Activities / <i>Layout Construction</i> (see Notes)	10am until late
Wed	8th	"Daylighters" - General Activities (see Notes)	10am until 5pm
Fri	10th	Feature Night – TBA... if not possible General Activities	7:30pm until 10pm
Sat	11th	Layout Operation (see Notes) & Monthly Forum	10am until late
		Ladies Needles & Natter	2pm
Wed	15th	"Daylighters" - General Activities (see Notes)	10am until 5pm
Fri	17th	Layout Operation – Australian Steam / <i>Structured Running</i> (see Notes)	7:30pm until 10pm
Sat	18th	General Activities / <i>Layout Construction</i> (see Notes)	10am until late
Sun	19th	<i>Stoney Creek Work Day</i> <i>No Facility Fee</i>	10am until finished
Wed	22nd	"Daylighters" - General Activities (see Notes)	10am until 5pm
Fri	24th	Train Maintenance and Testing Night	7:30pm until 10pm
Sat	25th	Layout Operation (see Notes)	10am until late
Wed	29th	"Daylighters" - General Activities (see Notes)	10am until 5pm

MARCH

Fri	2nd	Layout Operation / <i>Structured Running</i> (see Notes)	7:30pm until 10pm
Sat	3rd	General Activities / <i>Layout Construction</i> (see Notes)	10am until late
Sun	4th	Thirlmere Festival of Steam - Display Thirlmere	
Wed	7th	"Daylighters" - General Activities (see Notes)	10am until 5pm
Fri	9th	Feature Night – TBA... if not possible General Activities	7:30pm until 10pm
Sat	10th	Layout Operation (see Notes) & Monthly Forum	10am until late
		Ladies Needles & Natter	2pm
Wed	14th	"Daylighters" - General Activities (see Notes)	10am until 5pm
Fri	16th	Layout Operation – UK / <i>Structured Running</i> (see Notes)	7:30pm until 10pm
Sat	17th	General Activities / <i>Layout Construction</i> (see Notes)	10am until late
Sun	18th	<i>Stoney Creek Work Day</i> <i>No Facility Fee</i>	10am until finished
Wed	21st	"Daylighters" - General Activities (see Notes)	10am until 5pm
Fri	23rd	Train Maintenance and Testing Night	7:30pm until 10pm
Sat	24th	Pre-Open Weekend – Working Bee	10am until late
Wed	28th	"Daylighters" - General Activities (see Notes)	10am until 5pm
Fri	30th	Open Weekend – Preparation	7:30pm until 10pm
Sat	31st	* * OPEN WEEKEND * *	10am until 4pm, visitor entry by gold coin donation

APRIL

Sun	1st	* * OPEN WEEKEND * *	10am until 4pm, visitor entry by gold coin donation
-----	-----	-----------------------------	---

NOTES

WORK NIGHTS: most Monday nights, please check with the appropriate layout supervisor, 7:30pm until 10pm, No Facility Fee

LAYOUT OPERATION: O and N Gauges operational, HO (fixed) *as permitted during construction*

STRUCTURED RUNNING: Sequenced or timetabled operation as organised for each layout

GENERAL ACTIVITIES: the facilities may be used *as permitted* e.g. layout construction, some running, modelling, library, etc

Members Facility Fee unless otherwise indicated: Adults \$6, Juniors/Seniors (70+) \$3.

Guests are welcome unless otherwise indicated

This program may be subject to change without notice where necessary. Updated programmes available from the Clubrooms, or from www.amransw.asn.au

Address: 48 Barry Avenue (PO Box 277), Mortdale NSW 2223 - Phone (02) 9153-5901, Fax (02) 9153-5905

Branch AGM 19 November 2011

This years Branch AGM was held at the clubrooms with 36 members attending. The minutes of the previous AGM were read and reports were tabled by the president, secretary and treasurer. The election of officers for the management committee followed with the incumbent committee being re-elected unopposed. I would like to take this opportunity to thank the committee for all of its hard work over the past year and for the confidence of the membership in electing the committee to continue for another year.

After the election of officers it was time to present a Meritorious Award to a very worthy worker in the Branch. Geoff Lanham was presented with the award for his service to the Branch as secretary, production of Mortdale Matters for 6 issues and his general hard work around the clubrooms where ever it is required. See the letter to the Federal Committee stating the case for Geoff's nomination for the award.

During general business it was requested that Mark Dalli and Thomas Durber be recognised for their work in producing Mortdale Matters. Their efforts are greatly appreciated by the committee and membership and I would like to thank both of you for your time spent in this valuable work.

The management committee for 2012 is:

President: Barry Wilcockson

Vice President: David Bennett

Secretary: Geoff Lanham

Treasurer: Marilyn Wilcockson

Exhibition Manager: Alan Cross

Publicity Officer: Philip Lee

Junior Development Officer: Rod Fussell

Barry Wilcockson

Sale Day - 2011

There was a great deal of activity around the clubrooms early on Saturday 3rd December, as members set up their tables with goods for sale. It had been decided to hold a Sale Day instead of the normal Members' Auction, due to the decrease in interest in the auctions.

Members were able to hire a table area for \$20, and offer any goods they had for sale. The committee also had some donated items for sale. The committee had five tables of goods, and John Smythe had organised to offer some excess stock of magazines and books for sale. Five table spaces were sold to members.

Once morning tea was finished, business got underway. Many items were sold by both the individual members, and the committee. The financial result for the Branch was certainly a lot better than has been generated at the recent auctions. However, it must be remembered that we did have a large number of items donated that were able to be sold.

Thanks to those members and friends who supported the day, either by hiring a table, or purchasing some items.

In 2012 our plan is to hold a Members' Auction early in the year, and hold another Table Sale Day later in the year.

Marilyn Wilcockson

O Scale Layout



NSWGR's 3802 speeds through Hoganvale on the O scale layout.
PHOTO by Mark Dalli



PREPAID FACILITY FEE



Full Calendar Year

(January 2012 to December 2012)

Adults \$360 / Concession \$180

Six Months — Half Year

(January 2012 to June 2012 / July 2012 to December 2012)

Adults \$180 / Concession \$90

Payable before the end of the first month.

**NOTE : PREPAID FACILITY FEES DO NOT COVER ATTENDANCE ON A SUNDAY,
fees of \$6 or \$3 are payable.**

HO Scale Layout



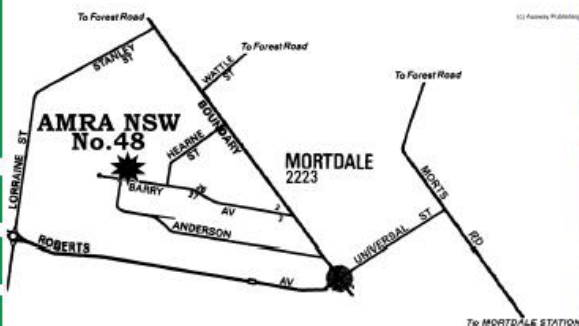
CLF7 leads a QRN intermodal container freight to a stop shy of Read platform #1.
PHOTO by Mark Dalli

Open Weekend



Australian Model Railway Association - NSW Branch

- 48 Barry Avenue Mortdale -
- Saturday 31st March & 1st April 2012 -
- 10am until 4pm -
- Visitor entry by gold coin donation -



N Scale (1:160) - HO Scale (1:87) - O Scale (1:43)
"U-Drive" HO Layout - Sausage sizzle - Retail Outlets

For more information please call (02) 9153-5901 or visit www.amransw.asn.au

N Scale Layout

Polystyrene make is being used to form the landforms around the new extension of Leafton.

David Bennett

N Scale Layout Coordinator



Scenery works taking place at Leafton.

PHOTO by Mark Dalli.

Mortdale Building Report

Our property/clubrooms was inspected by an Electricity Efficiency Assessor, to see if we qualify for a government subsidy, to improve our use of electricity.

David Bennett

Mortdale Building Manager

Vintage Train Day at Trainworks

The Branch received an invitation to exhibit the U-Drive layout as part of the Vintage Train Day at Trainworks at Thirlmere on Sunday 4th December.

A small group of 6 branch members volunteered to take the layout for display, and to man it for the day. Bill, Bruce and Jason were there dedicated to the smooth running of the layout, Barry, Marilyn and Geoff assisting in the transport and setup of the layout; and dismantling and returning the layout to the clubrooms. I would like to make a special mention of Jason's involvement in displaying the layout. Jason has 'grown up' on the U-Drive layout, having started assisting Bill with operating the layout many years ago. He has become Bill's 'right hand man' when it comes to manning the layout. He always makes himself available when the layout is on display, whether at the clubrooms on Open Days, at the Branch Exhibitions, and at other activities. Jason was asked on the Saturday before this latest event if he was able to assist, and he was keen to join in.

The attendance was disappointing, with very few members of the public visiting the centre on the day. However, all those who attended had a very enjoyable day. The three layouts that were in attendance were displayed in the Great Train Hall, the main display area of Trainworks. It was great to be amongst displays of preserved items of railway history.

Marilyn Wilcockson



PHOTO by Marilyn Wilcockson

Exhibition Workers' Thank You and Christmas Dinner



In the past the committee has organised a special event to thank the exhibition workers. We have spent many interesting times at the Tramway Museum at Loftus, and then Western Districts Live Steamers at Smithfield and last year at the Train Shed at Vicery's Winery.

This year we decided to hold a dinner at the clubrooms and make it a joint thank you and Christmas dinner. To save the hard working ladies, a spit roast caterer was organised to supply the meal, which meant that they could enjoy the evening without having to be involved in the catering.



The day began with lots of rain and threatening skies, even though the weather forecast was for a fine sunny afternoon. Right on cue the sun appeared at lunch time. After afternoon tea the tables were set up for the dinner. The tables were adorned with Christmas table cloths, a Christmas tree centrepiece, the best silverware, Christmas bonbons and even a chocolate Santa per setting.



While we mingled in the half hour before dinner was served, we enjoyed nibblies and a slideshow of black and white photos from Norm Read's collection. The slideshow was put together by Ross Verdich and the ARHS.

Dinner was a spit roast which consisted of ham, beef and turkey and 5 varieties of salad. The dinner was prepared and served by the caterer's chef and her assistant – none of our ladies had to lift a finger except to feed themselves.



After dinner we were treated to a presentation from our guest speaker. Craig Mackey is the Project Manager in charge of the 3801 restoration. Craig gave us an update of the status of the boiler and a power point presentation of photos showing the extra work that is now able to be done on 3801 with the extra time available while the boiler is in Germany being brought up to specifications.

Craig's presentation was followed by desert consisting of pavlova and cheesecake.

But wait – there was more. Santa deputised Marilyn to distribute a gift to all present.

Overall it was a very enjoyable evening and the credit must go to Marilyn for her organising skills. She organised the caterers, the table settings, the guest speaker and the gifts. She even organised the people who set up the tables and chairs and the setting of the tables even down to same coloured chairs at each table and there could not be 2 of the same bonbons side by side on a table.

Thank you Marilyn for a great evening; we will have to do it again.

Barry Wilcockson

ALL PHOTOS by Marilyn Wilcockson

Branch Appreciation Awards



Each year for the past eight years the Committee of Management has acknowledged the contribution made by individual members to the Branch's successful operation. This year was no different.

At the Exhibition Workers' Thank You and Branch Christmas Function, three awards were made to worthy recipients.

As well as doing a sterling job as the Exhibition Manager, Alan Cross contributes to the maintenance of the building on a regular basis. Alan spends many hours cleaning and polishing the vinyl flooring, and assisting around the clubrooms as needed. (Left)

As the layout supervisor for the HO fixed layout, Stoney Creek, Denis Gilmore has been a true asset to the club. His time and knowledge has kept the development of the layout on the move. Denis also assists in the marking out of the halls for the annual exhibition, and makes himself available

to assist with any other situation that may arise during the exhibition each year. He also plays a vital role in displaying the clubrooms and our facilities on Open Days. (Below left)



Warren Oprey has made himself, and his van, available to assist with transport of equipment for the annual exhibition. He has assisted with transporting the guessing competition layout to the exhibition, and either its return to the clubrooms to await collection by or delivery to its winner, or as in this year's case, delivery to the winner on the Monday night of the exhibition. (Top right)

Each of these three member's contribution to the Branch's operation is appreciated.

Marilyn Wilcockson

ALL PHOTOS by Marilyn Wilcockson

Meritorious Award

In any club or association, there are always many tasks that need to be undertaken. Members assist in whatever way they see fit. Some are happy to go along and just be a member, whilst others tend to throw themselves at almost every job that has to be done.

The AMRA has many of these members. It would be nice to be able to recognise each individual's efforts, but this year we would like to acknowledge one such member in particular.

Although AMRA NSW has been active for 55 years, and we still have some of those original members active in the group today, some of our newer members have also given of themselves to make our Association the thriving successful club it is today.

One such member has only been a member for less than 10 years. Joining our ranks in October 2002, he has been an active worker from the very start. Although the official records of the Association list him as an N Scale modeller, he does not limit himself just to that scale. He has assisted in the planning and development of our HO Stoney Creek layout, actively serving on the layout committee. He has also been seen getting involved on the O Scale layouts, both upstairs and downstairs. Oh, and he does get to play on the N scale from time to time, when his other activities allow him to. This member has also been involved in the U Drive layout, assisting with modifications when Bill has needed help, and also being available to man the layout when it has been displayed away from the clubrooms.

Although we are a model train association, as with any group, there are lots of jobs that need to be done other than just running trains, to ensure the smooth running of the group. This member has also used his knowledge to assist in many ways over the 9 years he has been a member. He has taken on the task of putting together our bi-monthly newsletter, Mortdale Matters, for a series of 7 issues, he has helped with work days around the clubrooms, helped fill several



Geoff in his gunzeling element on a NSWRTM tour to Moss Vale.
PHOTO by Chris Winston

waste bins when it has been time for a clean up of the premises, and has been seen lying around in the store room using his motor mechanic skills to revamp our treasured trailer to keep it on the road. As well as all these jobs, he has served as a Committee member for the past 6 years.

I have probably missed some notable tasks that he has undertaken over his relatively short time as a member, but hopefully he will forgive me for that. His efforts in making HIS club successful are appreciated, and we would like to acknowledge them by presenting Geoff Lanham with an Association Meritorious Award.

Marilyn Wilcockson,
on behalf of the Management Committee

AMRA NSW Members Model Gallery Issue 4

If you have an Australian model that you have built/detailed or weathered and you would like your work showcased in *Mortdale Matters*, please send me (Mark) an email to mdalli.mmatters@gmail.com with a paragraph about your model work and (optional) 1/1 scale (real life) info and of course photos of your model. If you do not have a camera I can take photos for you when I am at the clubrooms. If you do not have internet you can leave a hard copy at the clubrooms and I will pick it up.

I encourage everyone to send something in. It does not have to be the bees knees, it can be as simple as a weathered loco or rollingstock item.

Mark Dalli

Mortdale Matters editor

Pacific National 8050 locomotive by Mark Dalli and Rod Fussell

Some time ago I built a number of cement wagons. I needed a loco to pull the consist so I thought I would model Pacific National's 8050 (80 class).

For the model I used an Austrains Pacific National 8011 model. First I had to remove the 8011 numbers, this was done by using Isocol (rubbing alcohol) and a cotton bud which was rubbed softly on the 8011 numbers until they were gone. Then I added blinds in the cabs, using cut paper which was glued to the inside of the windows. The model was then detailed with air hoses, cab side mirrors and steps, which was simple, all that was needed to do was paint, drill holes and then glue into place. New numbers were applied (8050) which came in a decal sheet. To finish the model, Rod Fussell added a few extra touches such as white strips along the side on the model to represent reflector boards, he also drilled the top of the exhaust stack out, painted the antenna white and last of all weathered the model with his exceptional weathering skills.

This model now looks more realistic and the work was worth it 100%. If you have any questions about the model, feel free to ask me at the clubrooms.

There will be many more projects to come in the future, keep tuned.

Mark Dalli



The completed model, on my home layout.
PHOTO by Mark Dalli

12 inch to the foot scale (The Real Thing)



CountryLink's XP2001 (XPT) in indigenous (NAIDOC) livery stands along side XP2011 at Sydney terminal back in 2010. All XP class power cars have now been refurbished, with new cab consoles, into the standard... Additionally, XP2004 now sports all-LED forward lighting with a backlit number board.

PHOTO by Glenn Percival



Pacific National's 8004 and DL42 sit in Enfield yard, waiting for their next task.

PHOTO by David Lane



Rod Fussell

Photo of the issue goes to Rod Fussell